

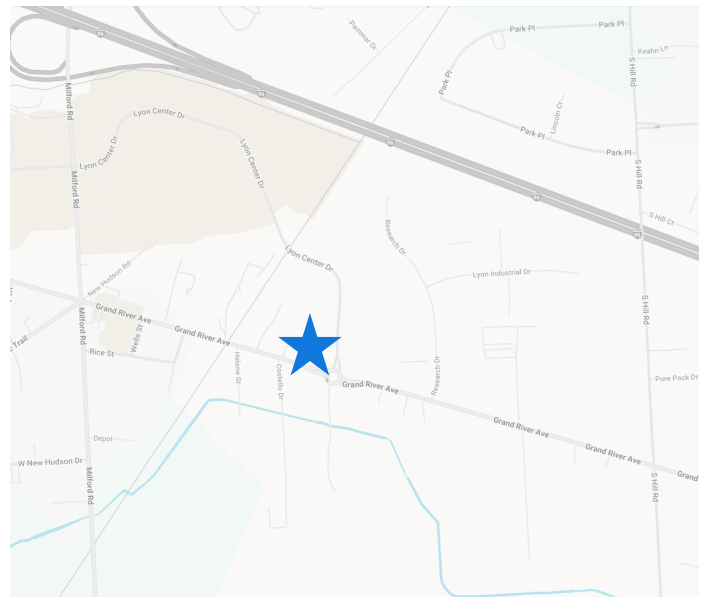


NEW HUDSON PLAZA

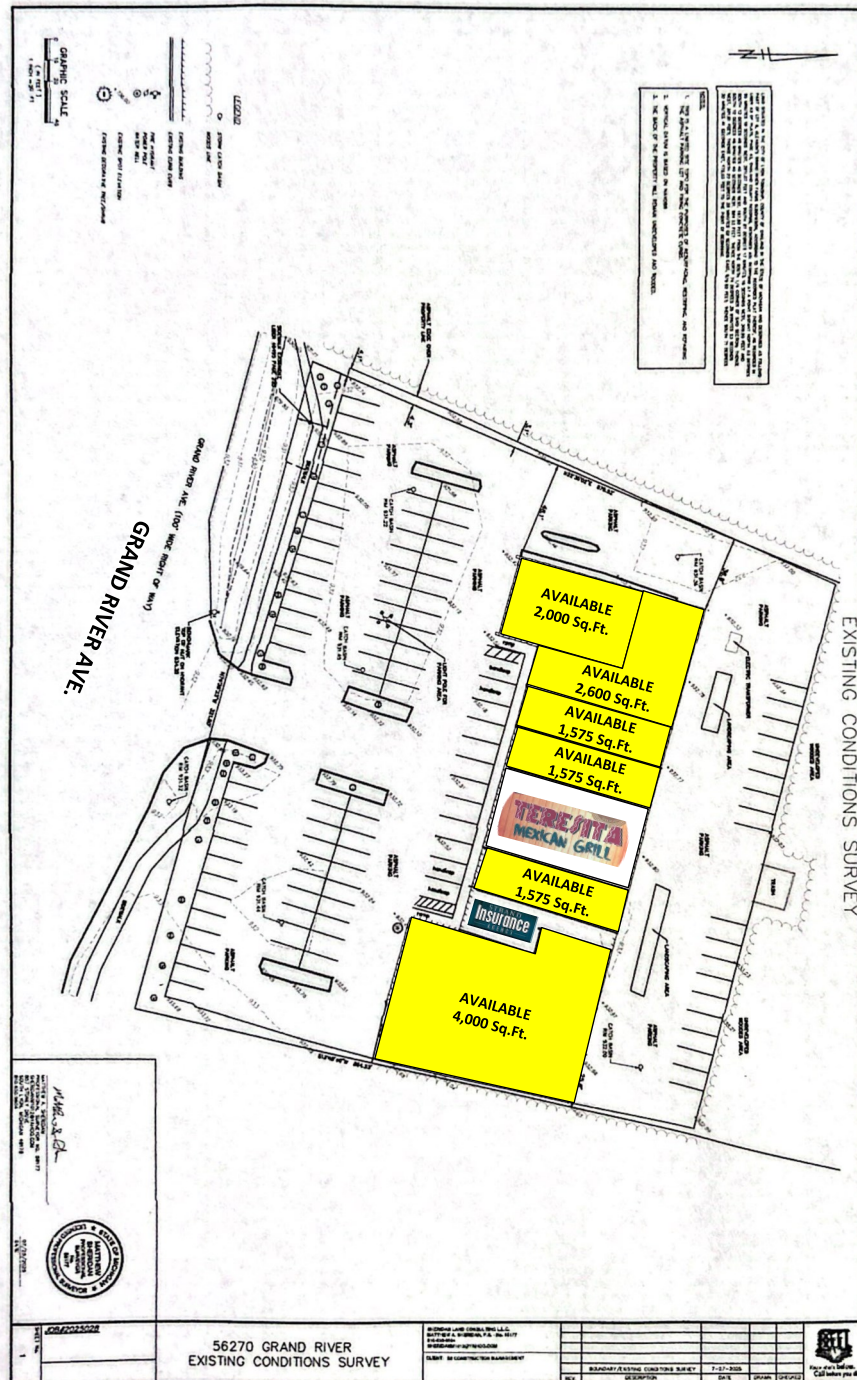
56270 Grand River Avenue New Hudson, MI 48165

PROPERTY DETAILS

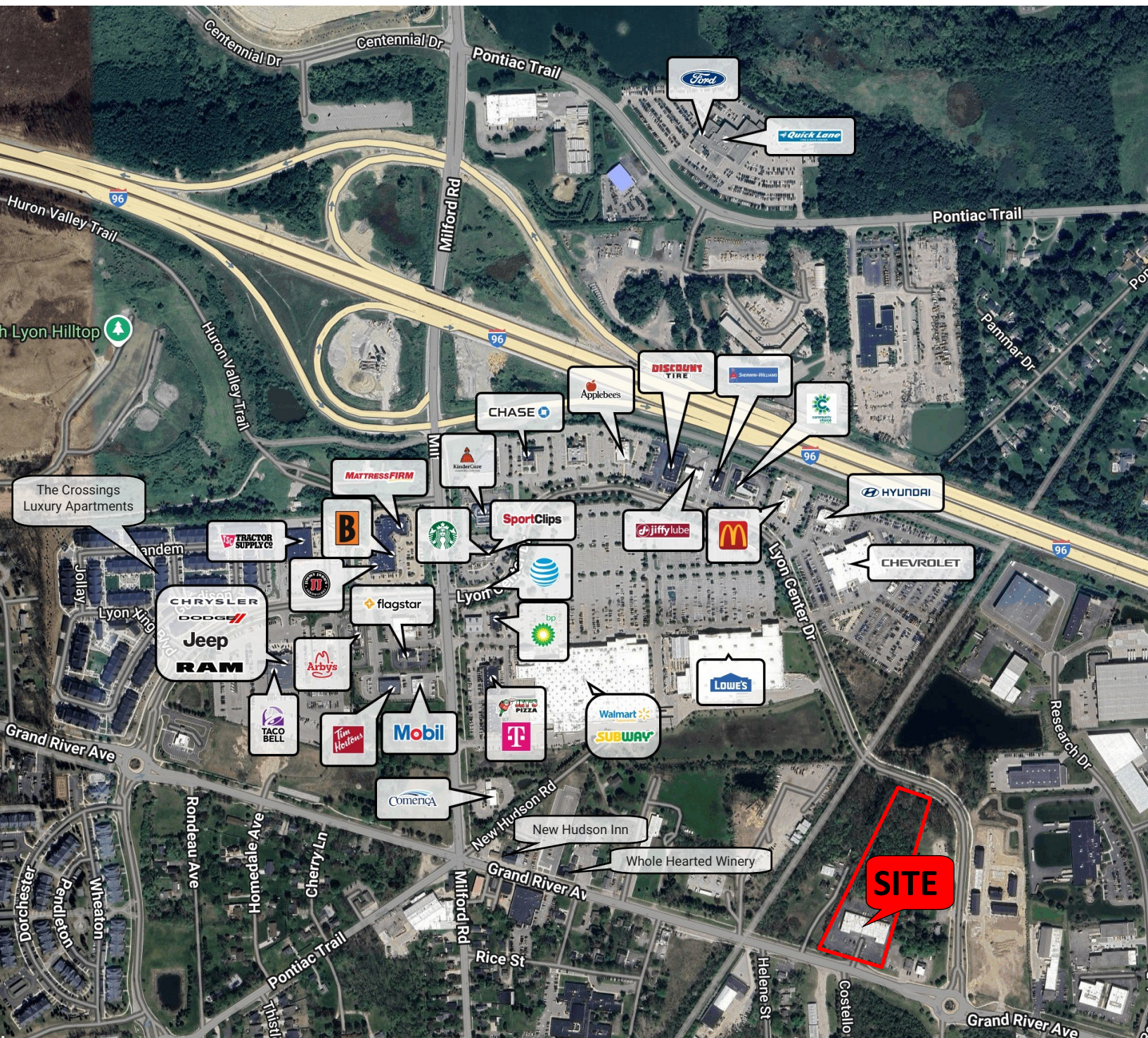
- Neighborhood Center Undergoing New Facade, Landscaping, Parking Lot, Lighting, and Curbs
- Located on the North Side of Grand River, East of Milford Road
- 1,575 - 7,750 Sq. Ft. Plus Outdoor Seating with Landscaping
- Class C liquor license available
- Close Proximity to I-96, Walmart, Lowes and Surrounded by Numerous Other National and Local Retailers and Restaurants
- Excellent Opportunity for Retail, Office and Medical Use



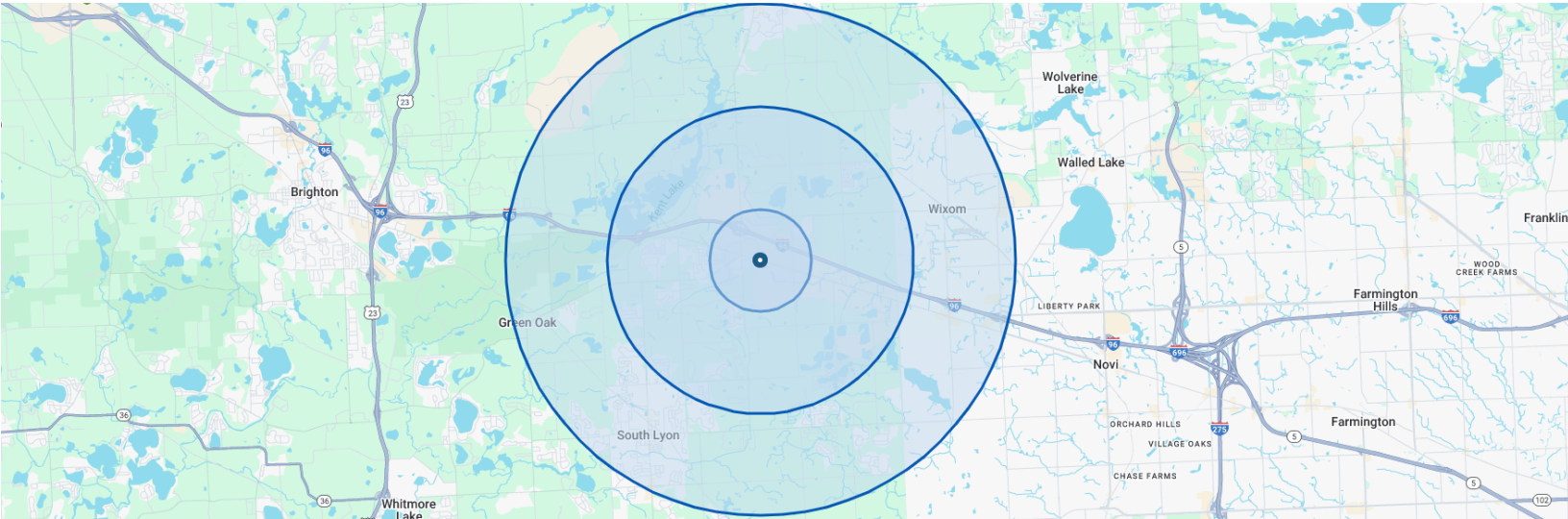
PROPERTY SITE PLAN



RETAILER AERIAL



DEMOGRAPHIC DATA



POPULATION	1 MILE	3 MILES	5 MILES
Total Population	1,847	16,254	66,428
Median Age	38.4	39.5	40.1
Median Age (Male)	39.0	39.6	39.4
Median Age (Female)	37.7	39.5	40.7

HOUSEHOLD INCOME	1 MILE	3 MILES	5 MILES
Total Households	655	5,864	25,880
Persons Per Household	2.8	2.7	2.5
Average Household Income	\$134,294	\$132,622	\$126,705
Median Home Value	\$384,053	\$372,958	\$361,673