

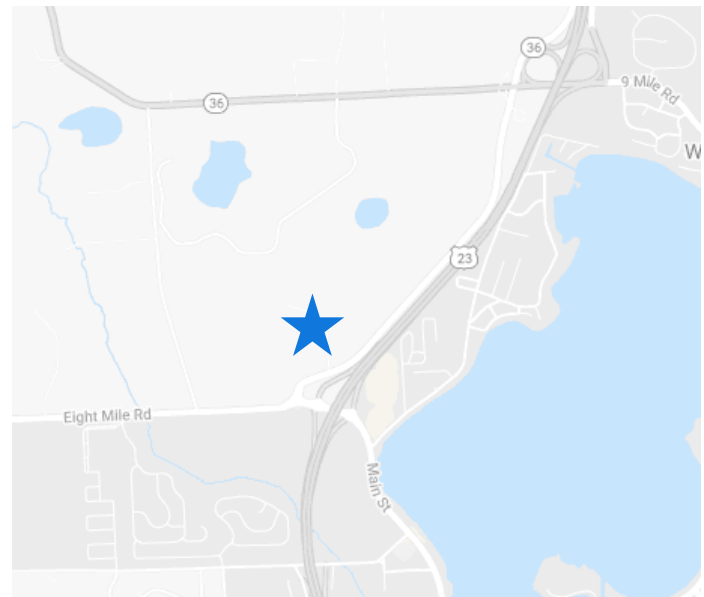


## LAKEVIEW CENTRE

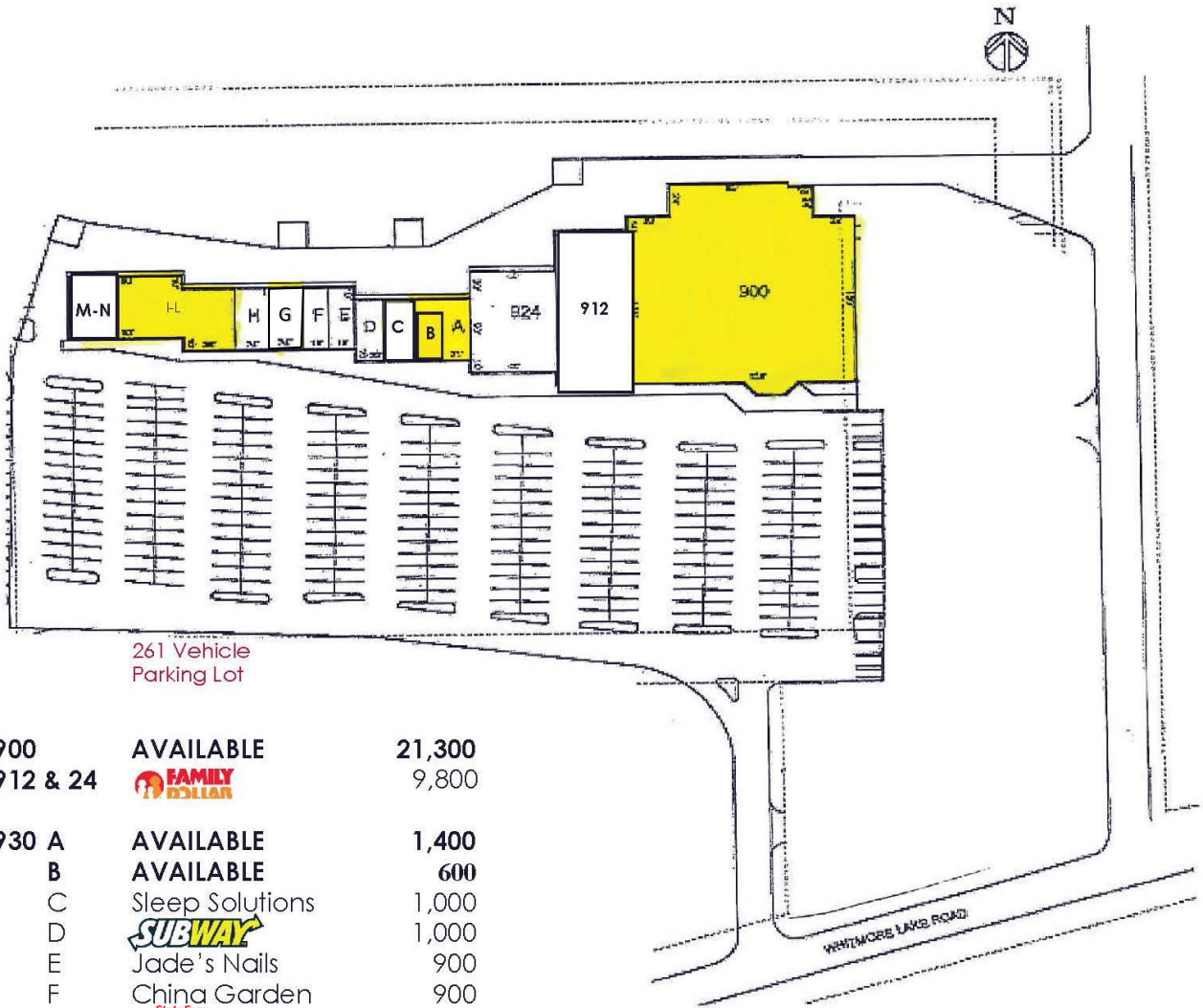
11900 - 11930 N. Whitmore Lake Road, Green Oak Township, MI 48189

### PROPERTY DETAILS





- Uniquely located between Ann Arbor and Brighton, directly off of US-23 at Eight Mile Rd. in Green Oak Township
- Extensively renovated and updated in 2016; i.e., new roof, facade, parking lot and landscaping
- Ready-to-lease spaces available from 600 - 21,300 Sq. Ft
- Excellent for retail, retail/showroom, retail/warehouse, professional/medical, business and general office uses
- 3 acre out parcel for sale or lease
- 5,500 Sq. Ft. (Pad #1) and 10,000 Sq. Ft. (Pad #2) building pad sites for lease
- Join Family Dollar, Hungry Howie's, Subway and More
- Traffic counts on US-23, South of 8 Mile Road; 76,045 VPD



**SITE PLAN**



261 Vehicle  
Parking Lot

11900	<b>AVAILABLE</b>	<b>21,300</b>
11912 & 24	 <b>FAMILY DOLLAR</b>	9,800
11930 A	<b>AVAILABLE</b>	<b>1,400</b>
B	<b>AVAILABLE</b>	<b>600</b>
C	Sleep Solutions	1,000
D	 <b>SUBWAY</b>	1,000
E	Jade's Nails	900
F	China Garden	900
G	 <b>State Farm</b>	1,200
H	 <b>Hinsley Nails</b>	1,200
I-L	<b>AVAILABLE</b>	<b>4,000</b>
M-N	Learning Dog Academy	<u>2,000</u>
		<b>45,300</b>

**ADDITIONAL PHOTOS**

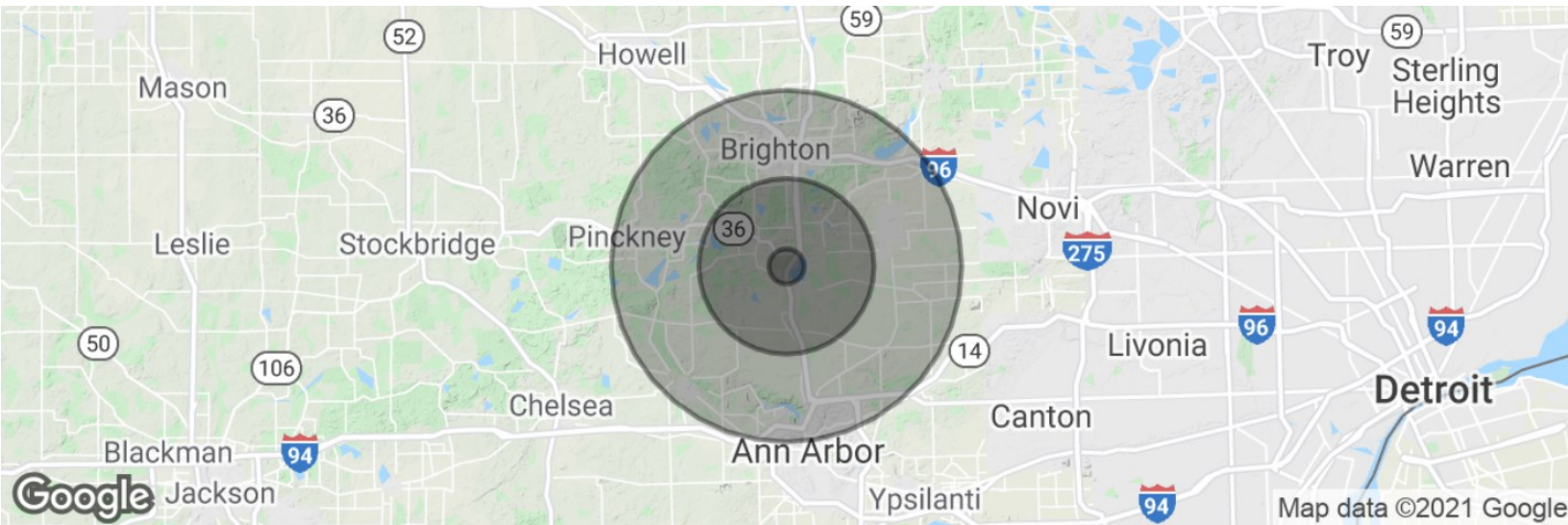


**ADDITIONAL PHOTOS**



**AERIAL VIEWS**



**DEMOGRAPHIC DATA**


POPULATION	1 MILE	3 MILES	5 MILES
Total Population	1,353	32,456	172,668
Median Age	37.3	40.6	39.8
Median Age (Male)	34.8	39.8	39.2
Median Age (Female)	39.3	41.2	40.5

HOUSEHOLD INCOME	1 MILE	3 MILES	5 MILES
Total Households	514	12,390	86,341
Persons Per Household	2.6	2.6	2.4
Average Household Income	\$75,185	\$83,209	\$84,127
Average Home Value	\$193,970	\$223,168	\$276,630