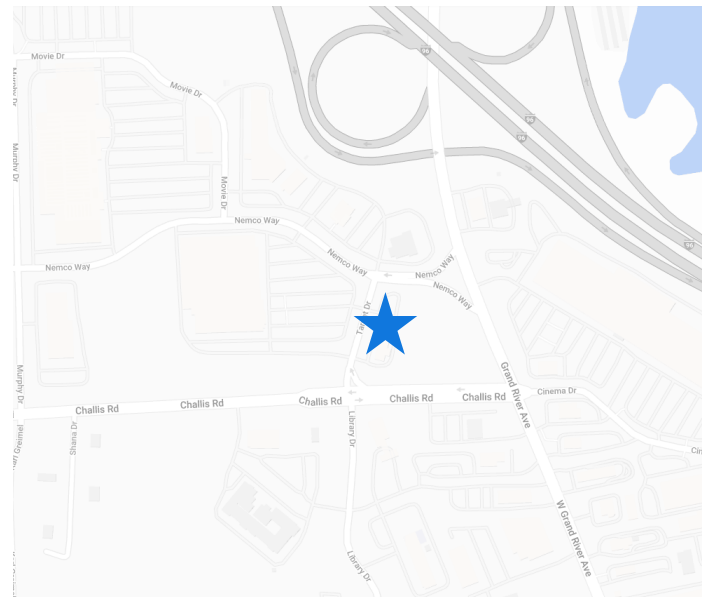




**8159 CHALLIS ROAD**  
Brighton, MI 48116

**PROPERTY DETAILS**

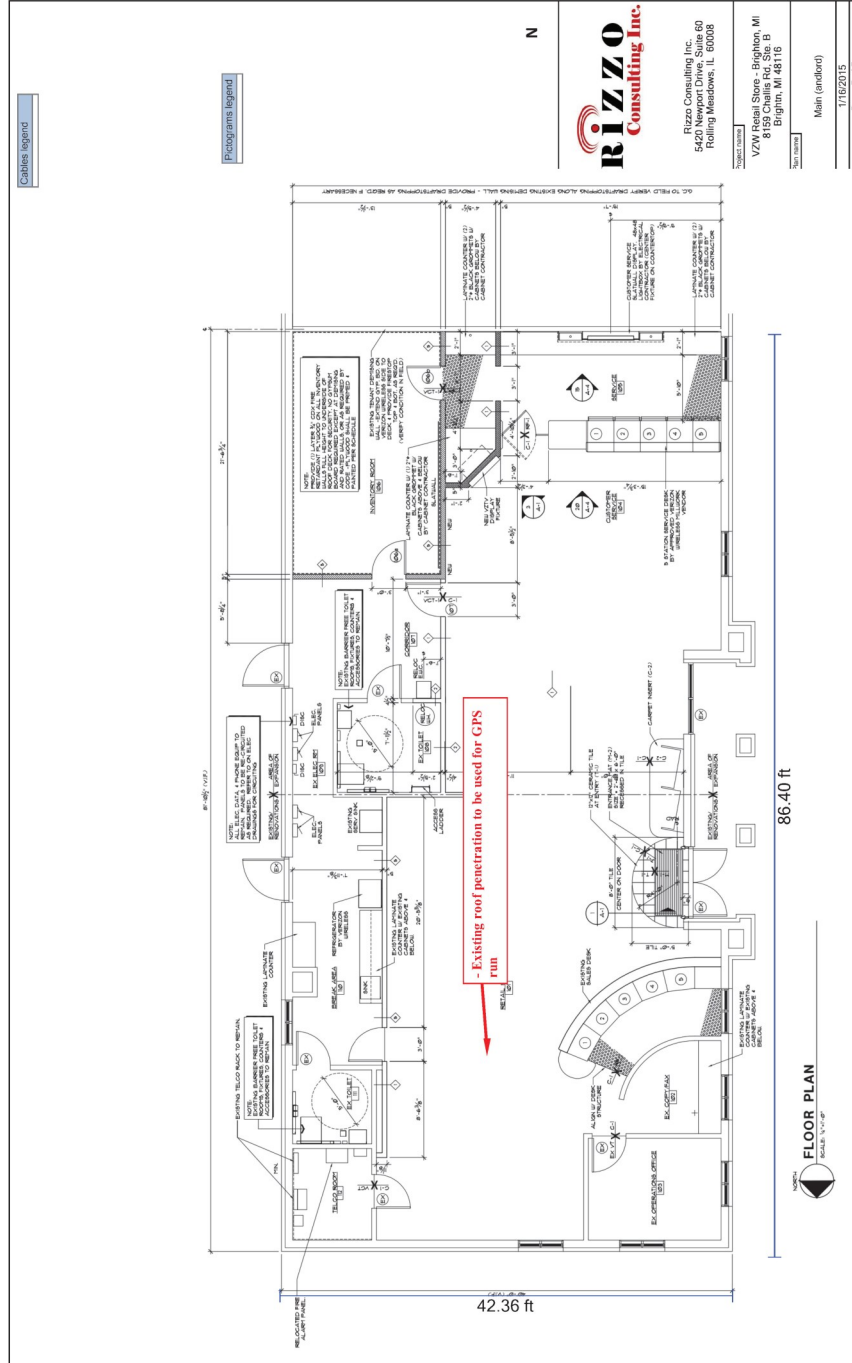
- 3,200 Square Foot Retail Building which can be Subdivided
- Located at the Corner of Grand River Avenue and Challis Road in the Heart of Brighton
- Part of Brighton Towne Square which is Anchored by Home Depot, Target, MJR Cinema 20, Holiday Inn and More
- Close Proximity to The I-96 / Grand River Interchange
- Suitable For Retail, Office or Medical Use



**SITE PLAN**



**FLOOR PLAN**



**RIZZO Consulting Inc.**  
Rizzo Consulting Inc.  
5420 Newport Drive, Suite 60  
Rolling Meadows, IL 60008

**PROJECT DATA**  
VZV North Star - Bldg 100, MI  
8150 Charles Rd, Ste. B  
Bingham, MI 48116

**DATE**  
Main (revised)  
11/16/2015  
Page 5 of 5

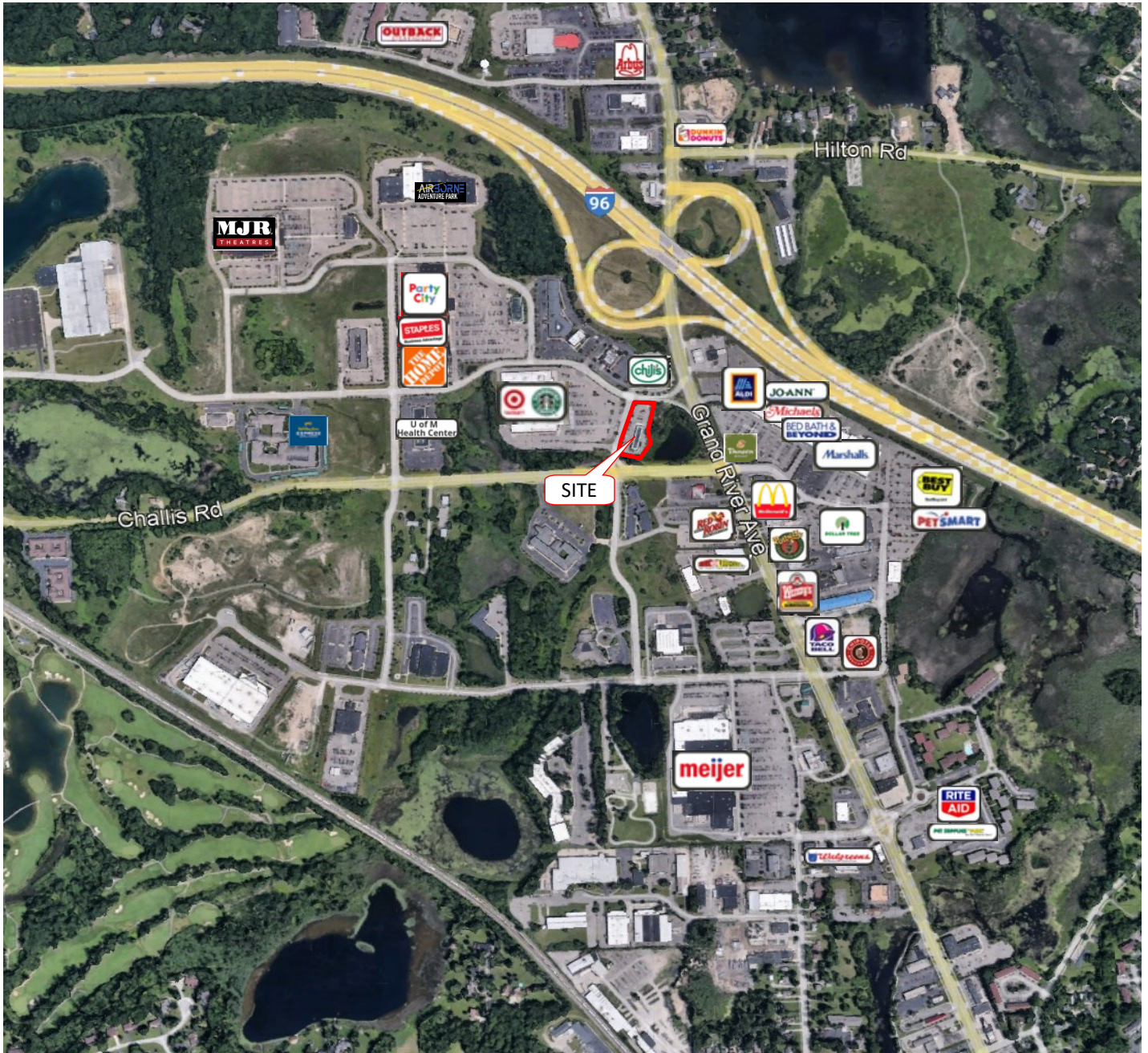


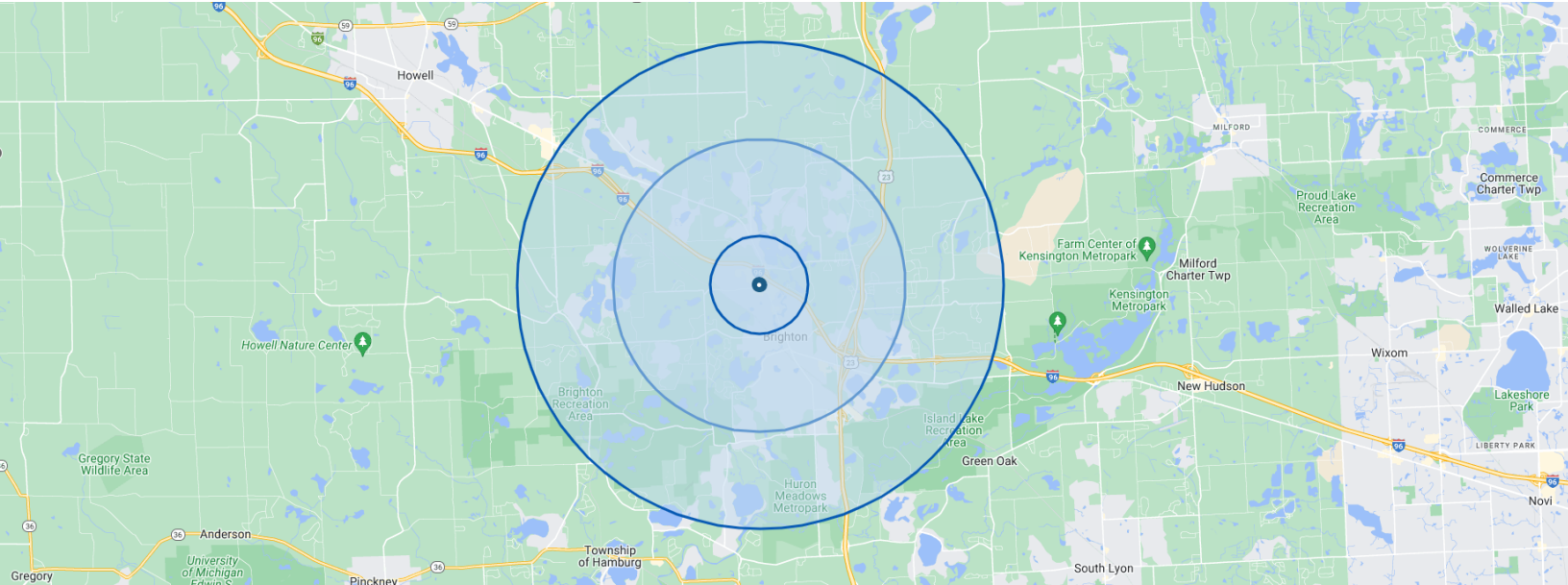
**ADDITIONAL PHOTOS**





**AERIAL PHOTO**



**DEMOGRAPHIC DATA**


POPULATION	1 MILE	3 MILES	5 MILES
Total Population	3,594	23,935	54,107
Median Age	45.8	43.1	41.6
Median Age (Male)	47.3	42.8	41.5
Median Age (Female)	45.4	43.4	41.5

HOUSEHOLD INCOME	1 MILE	3 MILES	5 MILES
Total Households	1,566	10,104	20,932
Persons Per Household	2.3	2.4	2.6
Average Household Income	\$58,420	\$93,937	\$84,127
Average Home Value	\$158,091	\$241,176	\$255,628