

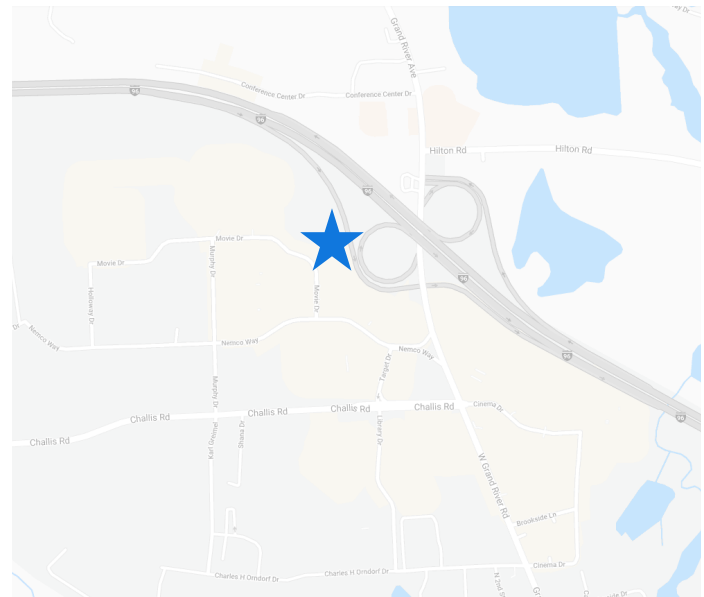


BRIGHTON TOWN SQUARE

8240-8280 Movie Drive, Brighton, MI 48116

PROPERTY DETAILS

- Premier Outlot Building Within Brighton Town Square
- Located at Grand River & I-96 in the Heart of Brighton's Dominant Retail Corridor
- 1,400 Sq. Ft. Available
- Multiple Points of Ingress & Egress from Signalized Intersections off of Grand River and Challis Roads
- Join Leo's Coney Island, Medical Weight Loss Clinic, GameStop and JT Hair Salon



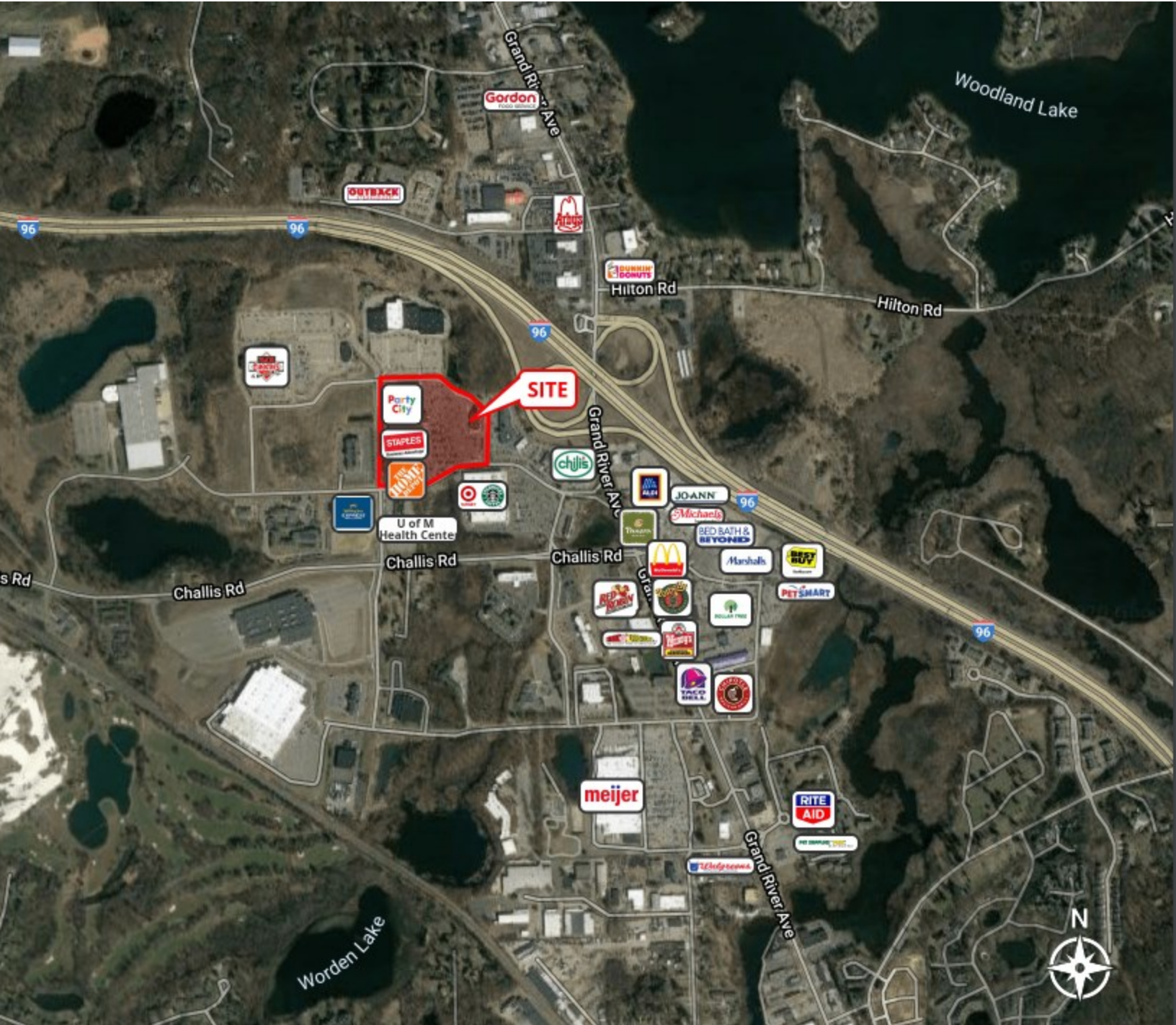
SITE PLAN

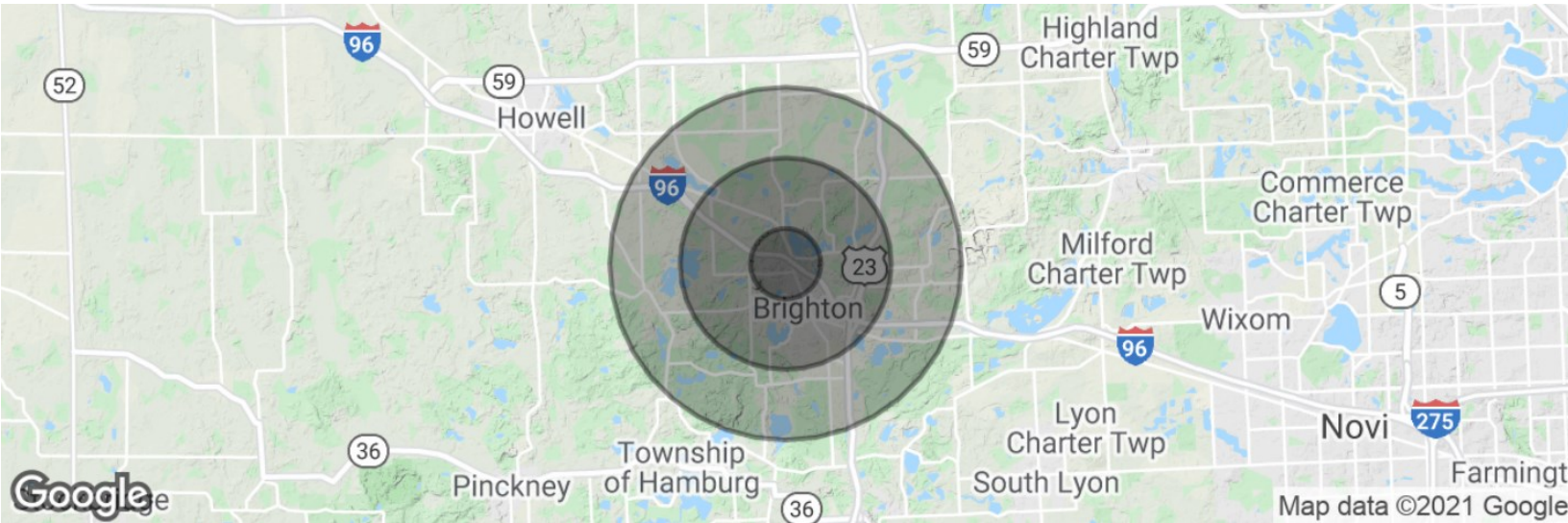


INTERIOR PHOTOS



RETAILER MAP



DEMOGRAPHIC DATA


POPULATION	1 MILE	3 MILES	5 MILES
Total Population	3,666	25,000	53,928
Median Age	45.4	42.8	41.7
Median Age (Male)	47.1	42.7	41.7
Median Age (Female)	44.9	43.0	41.5

HOUSEHOLD INCOME	1 MILE	3 MILES	5 MILES
Total Households	1,588	10,458	20,854
Persons Per Household	2.3	2.4	2.6
Average Household Income	\$59,260	\$76,084	\$87,265
Average Home Value	\$163,561	\$241,718	\$255,883