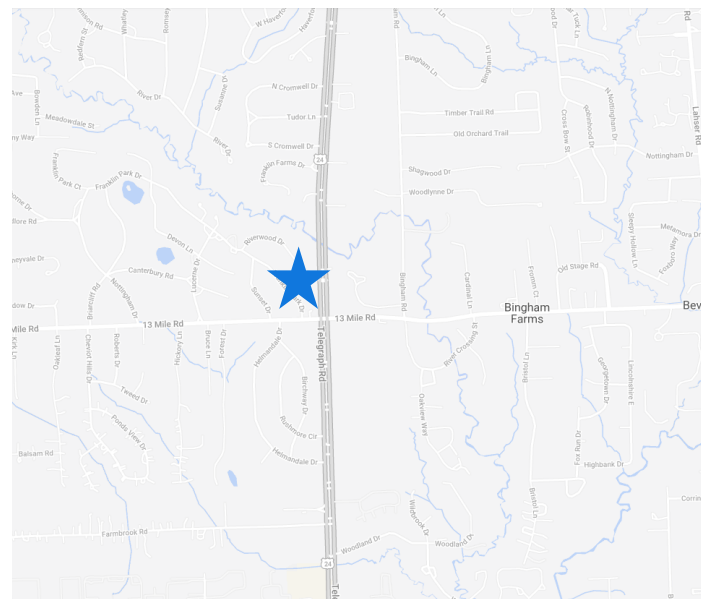




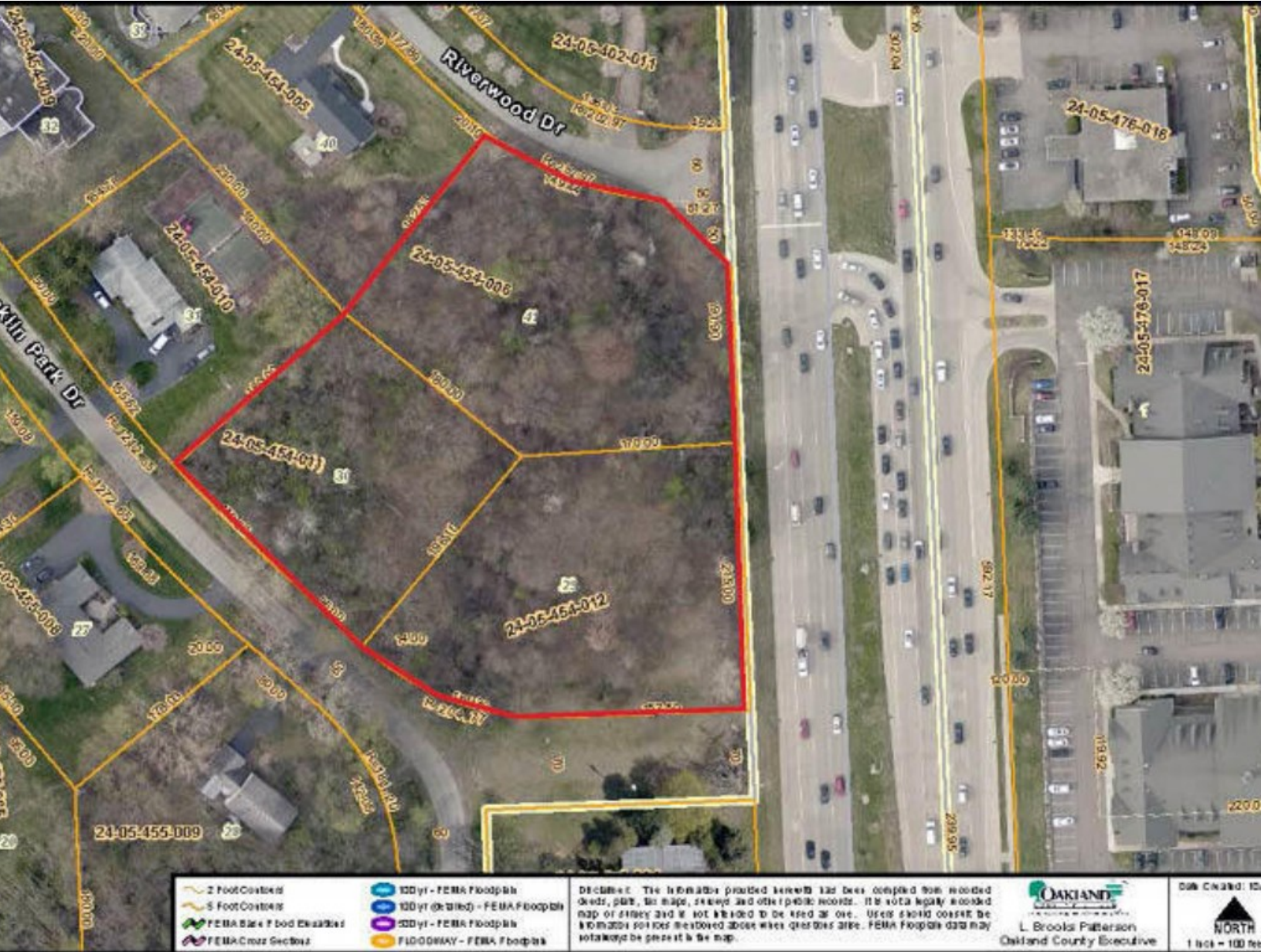
VACANT LAND - 3.22 ACRES
13 Mile & Telegraph, Franklin, MI 48025

PROPERTY DETAILS

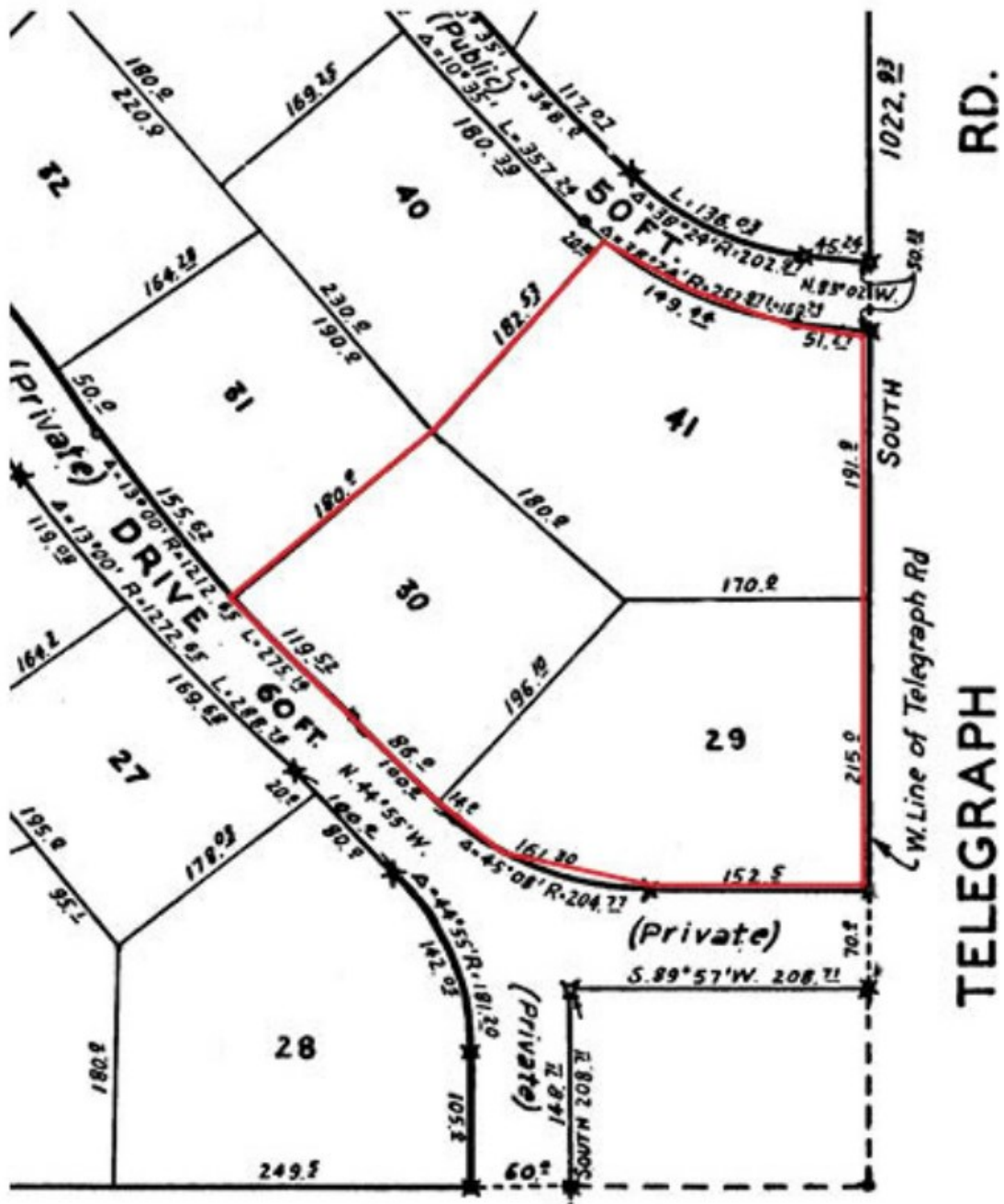
- Prime Vacant Land Consisting of 3.22 Acres
- Located at the NW Quadrant of Telegraph and 13 Mile Roads
- Zoned R-1
- Over 400' Frontage on Telegraph
- Centrally Located with Easy Access to Several Neighboring Communities, Restaurants, Shopping and Offices
- Close Proximity to I-696 and The Lodge Freeways



PLAT MAP



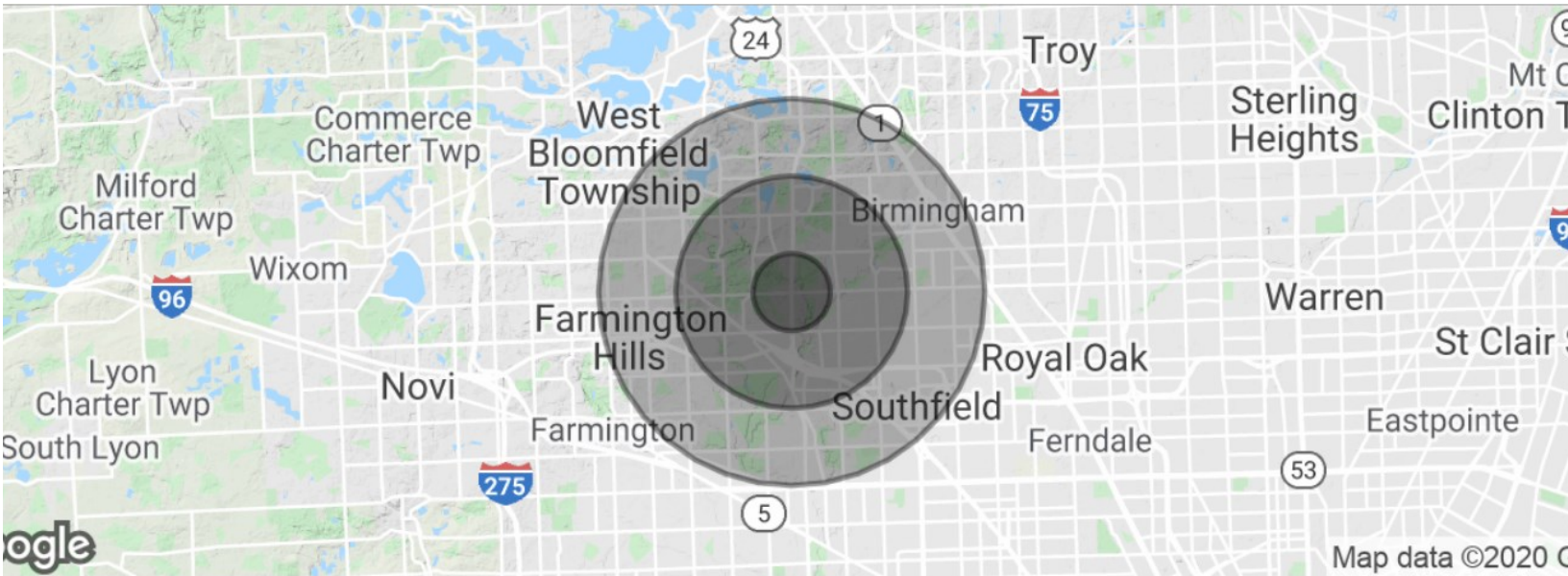
ENLARGED PLAT MAP



RETAIL AERIAL



Map data ©2020 Imagery ©2020 , CNES / Airbus, Landsat / Copernicus, Maxar Technologies, Sanborn, U.S. Geological Survey, USDA Farm Service Agency

DEMOGRAPHIC DATA


POPULATION	1 MILE	3 MILES	5 MILES
Total Population	4,168	55,249	162,795
Median Age	43.9	44.6	44.2
Median Age (Male)	43.4	42.9	42.9
Median Age (Female)	44.6	45.4	44.8

HOUSEHOLD INCOME	1 MILE	3 MILES	5 MILES
Total Households	1,662	24,393	67,430
Persons Per Household	2.5	2.3	2.4
Average Household Income	\$158,329	\$110,943	\$114,455
Median Home Value	\$279,050	\$382,028	\$359,540